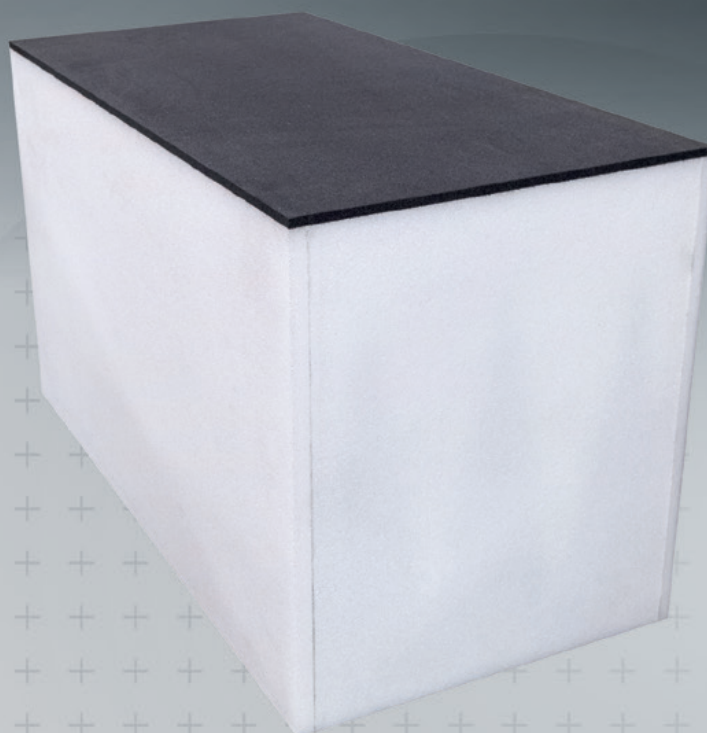




AEWW-EHD SERIES

Extra Heavy Duty Walkway Absorbers



Extra Heavy Duty Walkway

SOLUTION FOR

- Access to devices in chambers under intense use and/or in chambers where heavy equipment is moved regularly.

MAIN FEATURES

- Long life: 10+ years
- Rigid Non-compressing Surface
- Extra Load Bearing Capacity
- Non-slip matting available on request

PRODUCT CONFIGURATION

Shape

- Flat
- Step

Frequency band

- From 25 MHz to 6 GHz
- Higher bands possible, please consult our specialists

Standard base size

- 2' x 4' (60.96 cm x 121.92 cm)
- 2' x 2' (60.96 cm x 60.96 cm)

Height

- Standard: 4" to 24" (10.2 cm to 61 cm)
- Custom sizes available

Operating conditions

- Temperature: 70°F +/-5° (21°C +/-3°)
- Relative Humidity: 50% RH +/- 10%

Indoor

- Indoor

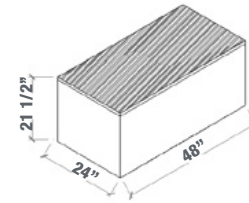
+ Description

MVG's Extra Heavy Duty walkway RF absorber is composed of a composite sandwich panel shell over a standard AEP type material. The AEW-ED offers excellent load bearing and wear characteristics. Its light weight but durable, rigid surface is impact resilient and ideal for rolling equipment into chambers. The material's ability to withstand higher loads than most walkway materials is due to the construction technique. Custom sizes and shapes can be provided. The walkway absorber is taller than standard absorbers. We generally recommend using walkways one size smaller than surrounding absorbers.

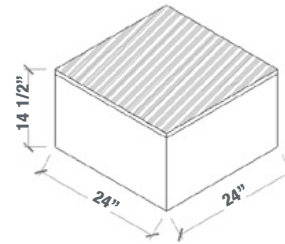
Typical reflectivity data is available on request.

ORDERING CODE

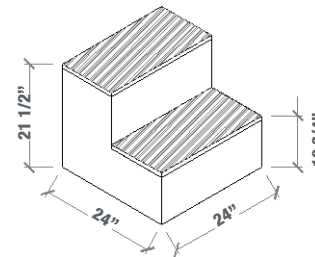
AEWW-XX-EHD, where **XX** designates internal absorber height in inches



AEWW-18-EHD 24" x 48" mechanical drawing



AEWW-12-EHD mechanical drawing



Custom walkway step

Specifications

		AEWW-4-EHD	AEWW-8-EHD	AEWW-12-EHD	AEWW-18-EHD	AEWW-24-EHD
Internal height	in	4	8	12	18	24
	cm	10.2	20.3	30.5	45.7	61
Size	in	24 x 24 x 5.5	24 x 24 x 9.5	24 x 24 x 14.5	24 x 24 x 21.5	24 x 24 x 29.5
	cm	61 x 61 x 14	61 x 61 x 24.1	61 x 61 x 36.8	61 x 61 x 54.6	61 x 61 x 74.9
Weight	lbs/pc.	5.5	7	9	17.5	21.5
	kg/pc.	2.5	3.2	4.1	7.9	9.8
Load capacity	lbs/pc.	2 000	2 000	2 000	2 000	2 000
	kg/pc.	900	900	900	900	900

