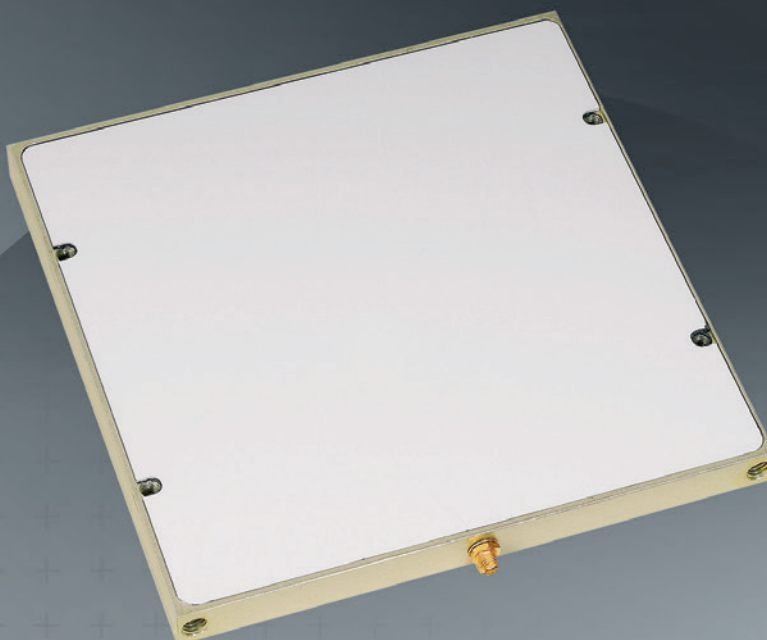


Planar Antennas for Wireless Communication Applications



SOLUTION FOR

- General transmitting and receiving applications from 880 MHz to 5.875 GHz
- Point-to-point telecommunications

MAIN FEATURES

Technical performance

- Optimized gain
- Power handling up to 10 W
- Supports long range point-to-point secure communications links
- Low profile shape ideal for covert tactical military applications

Design

- Easy to integrate in existing installation
- Connector on the side
- Fix to mast or on wall

Delivered documents

- Conformity certificate (measured VSWR)

Related standard

- IEC 60068

PRODUCT CONFIGURATION

Equipment

- Mast mount
- Wall mount

Related services

- Maintenance and customization

Electrical characteristics

Part number	PA088-A	PA170-A	PA180-A	PA192-A	PA240-A	PA250-A	PA330-A	PA515-A	
Frequency range	880 – 960 MHz	1710 – 1880 MHz	1700 – 2700 MHz	1800 – 1900 MHz	1920 – 2170 MHz	2400 – 2500 MHz	2500 – 2900 MHz	3300 – 3700 MHz	5150 – 5875 MHz
Gain	≥ 10 dBi GSM	≥ 11 dBi DCS	> 11 dBi	≥ 10 dBi	≥ 10 dBi	≥ 12 dBi	≥ 13 dBi	≥ 14 dBi	≥ 16 dBi
Side lobes H plan	< -18 dB	-	-	< -15 dB	< -15 dB	< -15 dB	< -12 dB	< -10 dB	< -20 dB
Side lobes V plan	-	< -18 dB	-	< -15 dB	< -15 dB	< -15 dB	< -12 dB	< -10 dB	< -20 dB
Beamwidth at 3 dB H plan	40° ± 6°	50° ± 6°	40° ± 8°	45° ± 5°	45° ± 2°	36° ± 2°	35° ± 5°	35° ± 5°	20° ± 5°
Beamwidth at 3 dB V plan	60° ± 6°	40° ± 6°	40° ± 8°	60° ± 5°	60° ± 2°	36° ± 2°	35° ± 5°	35° ± 5°	20° ± 5°
VSWR	1.5:1	1.5:1	2.0:1	1.5:1	1.5:1	1.8:1	1.5:1	1.5:1	1.8:1
CW power	10 W	10 W	10 W	10 W	10 W	10 W	10 W	10 W	10 W
Type	Patch array	Patch array	Patch array	Patch array	Patch array	Patch array	Patch array	Patch array	Patch array
Impedance	50 Ohms	50 Ohms	50 Ohms	50 Ohms	50 Ohms	50 Ohms	50 Ohms	50 Ohms	50 Ohms
Polarization	Linear vertical	Linear vertical	Linear vertical	Linear vertical	Linear vertical	Linear vertical	Linear vertical	Linear vertical	Linear vertical

Mechanical characteristics

Part number	PA088-A	PA170-A	PA180-A	PA192-A	PA240-A	PA250-A	PA330-A	PA515-A
Dimensions								
Length (A)	300 mm	200 mm	180 mm	180 mm	180 mm	180 mm	180 mm	180 mm
Width (B)	180 mm	200 mm	180 mm	180 mm	180 mm	180 mm	180 mm	180 mm
Thickness (C)	40 mm	40 mm	15 mm	15 mm	15 mm <td 15 mm	15 mm	15 mm	
Weight (max)	1.3 Kg	1.3 Kg	0.50 Kg	0.50 Kg	0.50 Kg	0.50 Kg	0.50 Kg	0.50 Kg
Radome	ABS PMMA (White)	ABS PC (White)	ABS PMMA (White)	ABS PMMA (White)	ABS PMMA (White)	ABS PMMA (White)	ABS PMMA (White)	ABS PMMA (White)
Connector	SMA Female	SMA Female	SMA Female	SMA Female	SMA Female	SMA Female	SMA Female	SMA Female
Operating temperature	-35° C - +75° C	-35° C - +75° C	-35° C - +75° C	-35° C - +75° C	-35° C - +75° C	-35° C - +75° C	-35° C - +75° C	-35° C - +75° C

